

DIY PLANS

Chimes

By: Lee Hite



A great sounding set of wind chimes can be built for about \$15 to \$40 depending on the chime set size you select. Choose from four height selections ranging from 36 to 75 inches (900-1900 mm).

This 5-chime set uses the C9 Chord (C, E, G, Bb, & D) tuning, which is similar to the pentatonic scale, but has a wider note separation for a good sound close in and at a distance.

Add your creative touch by altering the material and style used for the top support disk, striker and wind sail.

Economy is accomplished using polished chrome aluminum shower rod tubing available at local home improvement stores.

Using the DIY calculator from the website or the pre-calculated dimensions, you can always substitute an alternate material like copper tubing, EMT conduit or aluminum tubing.

Construction

1. First, decide on the overall size (height) for your chime set. Selections include four height categories based on the octave selected for the C9 Chord (C2, C3, C4 or C5). See the table below using one inch polished chrome aluminum shower rod tubing, 60 inches in length, from Home Depot™ or Lowes™ home improvement stores. Space permitting, the longer the chime tube, the lower and richer the sound. The C2 octave is used for the set shown at the right hand side of the page.

LARGE

C2 Octave for the C9 Chord

Approximate overall chime set height = 75 inches (1900 mm)

Longest chime = 60 inches (1525 mm)

Quantity of 60 inch tubes required = 5

Approximate tubing cost = \$36-

MEDIUM LARGE

C3 Octave for the C9 Chord

Approximate overall chime set height = 58 inches (1470 mm)

Longest chime = 43 inches (110 mm)

Quantity of 60 inch tubes required = 5

Approximate tubing cost = \$36-

MEDIUM

C4 Octave for the C9 Chord

Approximate overall chime set height = 46 inches (1170 mm)

Longest chime = 31 inches (790 mm)

Quantity of 60 inch tubes required = 3

Approximate tubing cost = \$18-

SMALL

C5 Octave for the C9 Chord

Approximate overall chime set height = 36 inches (915 mm)

Longest chime = 22 inches (560 mm)

Quantity of 60 inch tubes required = 2

Approximate tubing cost = \$12-



2. From your decision in step one, purchase the required number of one inch outside diameter aluminum chromed shower rod tubing at your local home improvement store, like Home Depot™ or Lowe's™. See examples below



Fixed Shower Rod
 Lowe's Item # 27082 Model # 641SMV
 60 inch, polished chrome aluminum tubing,
 OD= 1.00" ID= .930" Wall = .035"



Departments

Bathroom > Bathroom Accessories & Hardware > Shower Curtains & Rods > Fixed Sh

Project Source 60-in Chrome Single Straight Zinc Fixed Shower Rod
 Item # 27082 Model # 641SMV

★★★★☆ (5 Reviews)

\$5.97



Glacier Bay Model # HD14016
 Internet # 205699635
 Store SKU # 1001227499
 60 in. Aluminum Builders Shower Rod in Chrome
 OD= 1.00" ID= .902" Wall = .049"



Glacier Bay | Model # HD14016 | Internet # 205699635 | Store SKU # 1001227499
60 in. Aluminum Builders Shower Rod in Chrome

5.48 /each

3. Cut the tubing to length using the chart on page 12 for wall thickness .049 (Home Depot) or on page 13 for wall thickness .035 (Lowe's). Use care to establish the correct length. Cut slightly long, about 1/8 inch, and file or grind to the final dimension. De-burr the ends to remove all sharp edges.

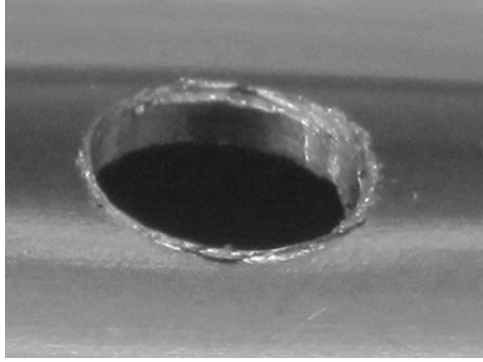
For example, if you purchased tubing from Lowe's and selected the C2 Octave, the length and hang point dimensions would be:

Note	Freq Hz	Length inches	Hang Point	Length mm	Hang Point
C2	65.40	60 3/4	13 5/8	1541.8	345.7
E	82.40	54 1/8	12 1/8	1373.7	308.0
G	98.01	49 5/8	11 1/8	1259.5	282.4
A [#] B ^b	116.50	45 1/2	10 3/16	1154.8	258.9
D3	146.80	40 9/16	9 1/8	1029.5	230.8

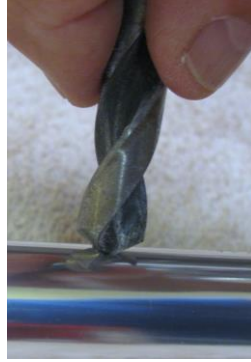
NOTE: If you selected the C2 octave for tubing from either source, you will notice from the chart the required length for C2 slightly exceeds 60 inches. Use the 60 inch length, as is, for C2, rather than 60 3/4 inch from the table. This slight reduction in length will not alter the overall sound of the wind chime set. This would not be acceptable for a musical application.

4. Drill a 1/8 inch or 3/16 inch holes (size determined by support line) at the hang point using the hang-point measurement in the chart you have selected. The hang point distance is measured from the end.

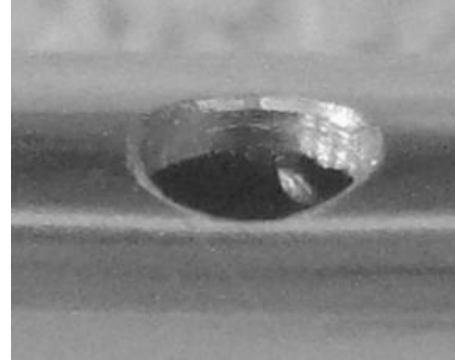
5. Using a drill bit larger than the hole, place the bit on the outside of the hole and lightly rotate by hand. This is generally enough to de-burr the outside hole.



Outside Before

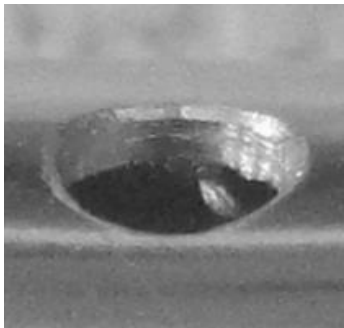


De-burr

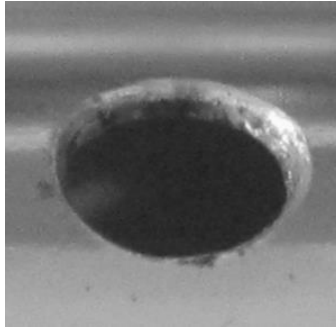


Outside After

6. De-burr the inside support hole. First, using a round or half-round file, remove the burr from inside the tube. Finish the task by using a section of coat hanger wire with a small bend at the far end. Place the wire in a drill and insert the bent end thru the hole. As you rotate the wire, lightly pull back on the drill and the bent wire will bend over any inside burr. See picture below.



Inside Before



Inside After

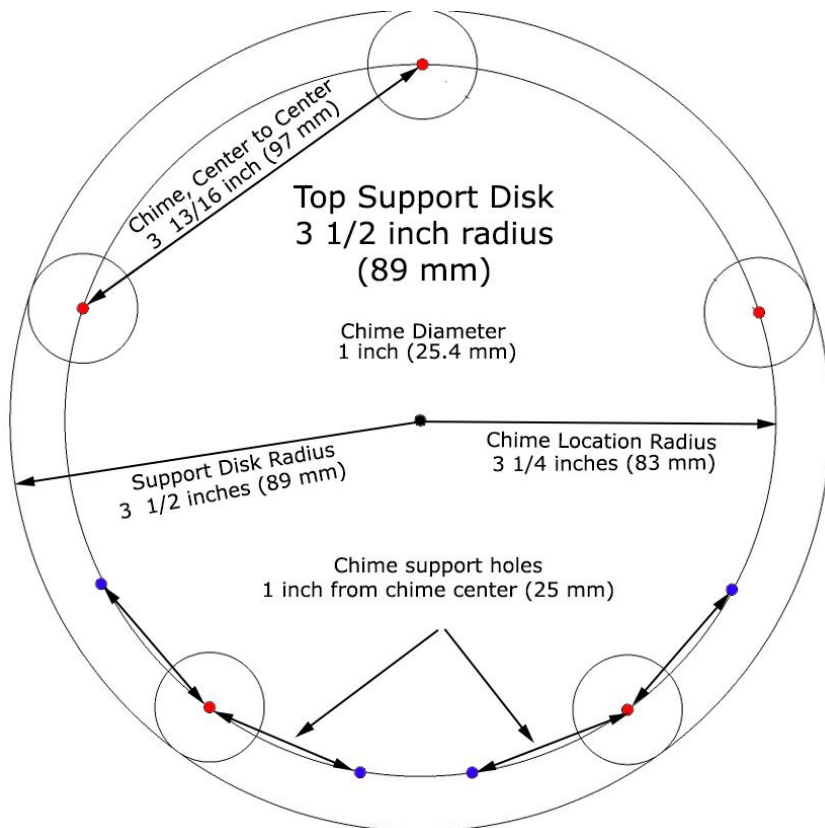


7. Build the support disk. Select material for the top support disk and striker that has good weather durability like red cedar, white cedar, treated lumber or engineered lumber. Also, creative materials might include a discarded nylon or plastic cutting board, decorative metal or plastic plates, funnels or other surprises found at flea markets.
8. Layout the top support disk according to the drawing on the next page. Draw and cut on a circle with a radius of 3 1/2 inches (89 mm). This is the outside diameter for the disk.
9. Draw a second circle with a radius of 3 1/4 inches (83 mm). Adjust a compass to exactly 3 13/16 inches (97 mm). Beginning at any random point on the 3 1/4 inch radius circle and walk the compass in both directions, making a mark every 3 13/16 inch (Red Dots). Moving the compass in both directions from the start helps to reduce measurement error. This will identify the center location for each of the 5 chimes.

10. If you are mounting the chime tube using a single hook for each chime, then this mark is the location for that hook. See page 9 for a picture of chime center mounting.
11. On the other hand, if you are supporting the chime tube with line or cord from each side of the chime, then mark a spot 1 inch (25 mm) each side of chime center (Blue Dots). That is the location for drilling a hole or mounting a hook to connect the side supported chime tube (most common).

Top Support Disk Layout Diagram (bottom side)

Top support disk radius = 3 1/2 inch (89 mm)
 Chime location circle radius = 3 1/4 inches (83 mm)
 Chime, Center to Center = 3 13/16 inch (97 mm)
 Chime support hole location = 1 inch (25 mm) each side of center
 Striker radius = 1 3/4 inches (45 mm)

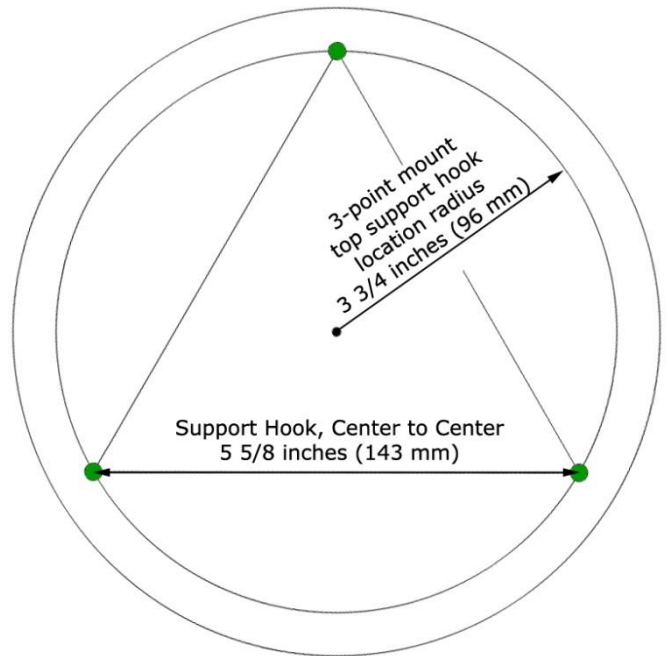


Bottom side for the support disk chime layout

If you're using a single line from the center of the tube to hang the chime, use the red dots for locating their support hook. On the other hand, if you're using two lines on the outside of the chime for support, use the blue dots to locate their support holes or hooks.

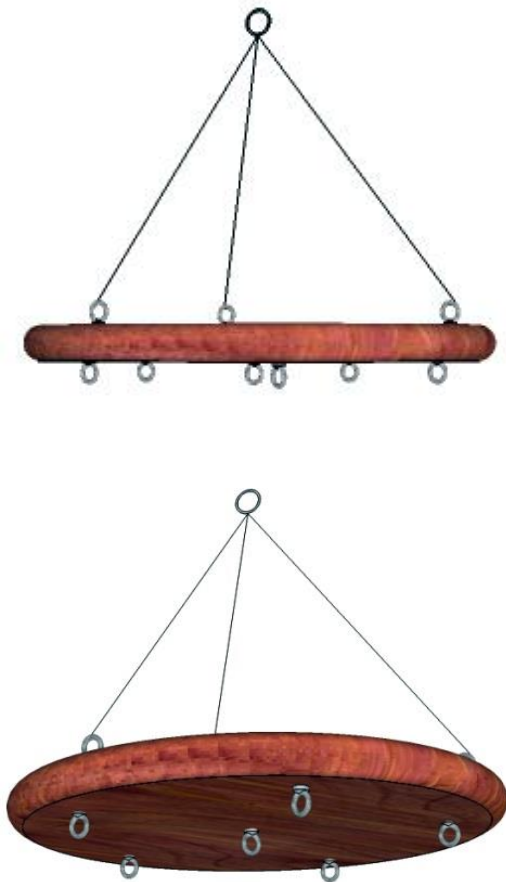
12. The top support disk can be hung using a single point mount or a 3-point mount. The single point mount uses an aluminum turnbuckle or steel screw eye as shown below.

To locate the marks for a 3-point mount, draw a circle with a radius of $3\frac{1}{4}$ inches (83 mm). Adjust a compass to exactly $5\frac{5}{8}$ inches (143 mm). Beginning at any random point on the $3\frac{1}{4}$ inch radius circle, walk the compass around the circle making a mark at all three locations (Green Dots). Insert small screw eyes at each location.

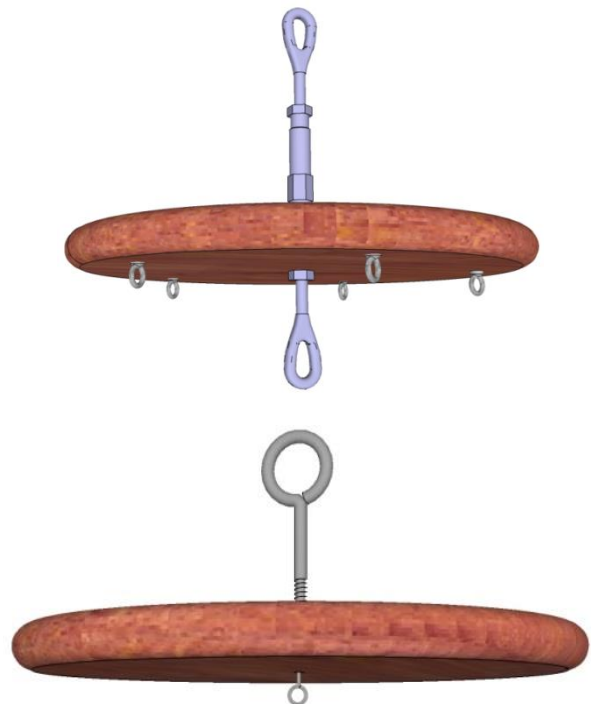


Top Support Disk Layout

3-Point Mount



**Single Point Mount
using a turnbuckle
or screw eyes**



13. Construct a striker with a radius of 1 ¾ inches (44 mm) from ½ to ¾ inch (12 to 16 mm) thick material. If possible, shape the edge into a bullet nose curve.

It is important that the striker hang horizontal and that can be accomplished using a 3/16" or ¼" aluminum turnbuckle as its axis. Locate the turnbuckle on the top side of the striker with the lower hook on the bottom side, as shown below. The bottom hook connects to the wind sail. This arrangement also works well to hang the top support plate. Use a locking nut at the top to prevent the bolt from loosening as the chime set twist in the wind. This same arrangement can be accomplished using screw eyes.



14. Make a wind sail about 4 to 6 inches in size from thin material about 1/8 inch thick or less. Drill a small hole at the edge to connect the striker line. A few creative [examples are here.](#)

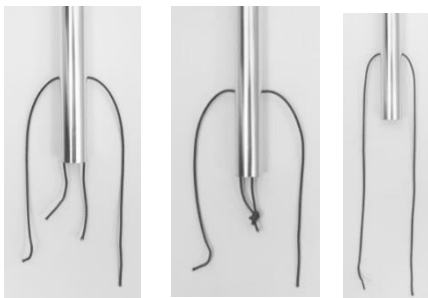
15. String the chime in preparation for attachment to the top support disk using method 1, 2 or 3, as follows:

Method 1 (outside support lines)

Picture A: Begin by holding the tube vertically and threading the support line into the hole from the outside, allowing it to fall out the bottom of the cylinder. Repeat this with a second section of line so you have two separate lines dangling from the bottom.

Picture B: Tie the two inside lines together at their ends.

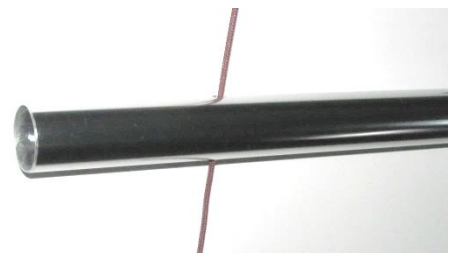
Picture C: Pull the knot back inside the tube using the outside lines.



A **B** **C**

Method 2 (outside support lines)

With a little practice, you may be able to thread the line directly through both holes as shown in picture E.



E

Method 3 (center support line, picture F or H)

After threading the line using either method 1 or 2 above, tie a knot at the ends of the two lines on the outside of the chime. Pull the line from the center of the tube until the ends are tight against the outside of the tube.

Tie a knot in the loop at the opening of the chime as shown in picture F and H. It's very important to tie this knot as close to the inside of the tube as you can. This knot will center the line in the tube and prevent it from touching the end of the tube, which would deaden or kill the chime sound.



F

Two lines tied together



G



H

One continuous line

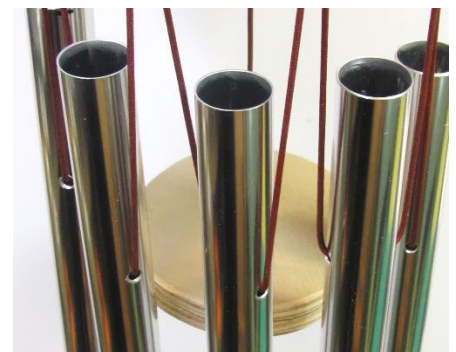
16. Attaching the chime to the top support disk: If you're using the dual line method of support (method one, picture C) thread each line through its respective hole (blue dots, page 5) and tie a knot. See picture J (each line has its own hole) or K & L (two lines share a hole).



J



K



L

Note: the plywood disk shown was for picture taking only and not recommended for outdoor use. The support line is heavier than required and used just for pictures.

Longevity for a chime is important and careful attention to the support lines and thru holes should be considered. Rapid wind changes and UV light can quickly deteriorate support lines, not to mention the many freeze/thaw cycles.

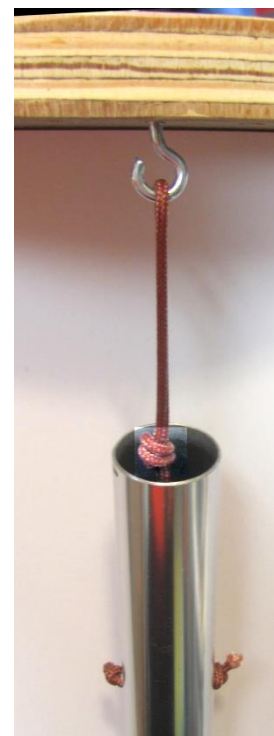
Nonmetallic support line:

Make sure the line is UV resistant. Choices include fishing line (either 80 pound braided or 30-50 pound monofilament), braided nylon line, braided plumb line, braided Dacron kite line, Venetian blind cord, string trimmer/weed eater line (.065 inch), awning cord, and braided electrical conduit pull line.

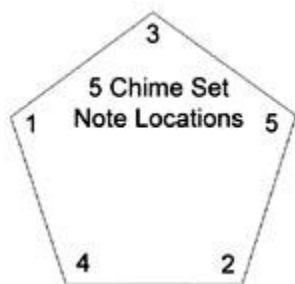
Metallic support line:

Thin wire, decorative chain (zinc plated, brass plated, or painted), 1/32 or 1/16 inch stainless steel cable (rust resistant), small aircraft control line cable.

If you're using the center loop method for support, then attach the line to a small hook on the underside of the support disk as shown right.



Chime configuration:



A circular striker will typically strike one chime at a time and can simultaneously strike two chimes. To enhance the overall sound, place widely separated notes next to each other. For example, to the left are location suggestions for sequencing, with chime number 1 as the shortest and 5 as the longest.

Numerous other support methods are available and described in the [DIY Tubular Bell Chime Handbook](#) and shown below.

Below are a few examples for supporting the wind chime set from website visitors.



17. Connect the striker to the bottom of the support disk, positioning it to rest about 1 to 3 inches above the shortest chime, as shown here.

18. Connect the wind sail to the bottom of the striker positioning it to hang about six inches or more below the longest chime.

19. After you hang the chime set in your favorite location and because of your local wind conditions, you may find that you are not completely satisfied with the performance of the set. They may chime too much or too little. Because wind conditions vary from location to location, feel free to modify the size and/or weight of the wind sail to produce the desired sound. I often find that a new design requires some adjustments after the initial design.

If you live in a strong wind area and the chimes are playing too much, and adjusting the size and weight of the sail did not quiet them down as you wanted, try slightly reducing the diameter of the striker to compensate for strong winds.



Use this page for tubing from Home Depot, OD= 1.00" ID= .902" Wall = .049"



Glacier Bay Model # HD14016
 Internet # 205699635
 Store SKU # 1001227499
 60 in. Aluminum Builders Shower Rod in Chrome



Chime Length Calculator for the C-9 Chord (C E G B ^b D)																					
A-440 For a Tube or Rod unrestricted at both ends																					
To determine the resonant frequency for a rod set the ID=0 and enter the OD and Metal Type																					
Enter values in BLUE , answers in ORANGE (inches) and in YELLOW (mm)																					
OD inches =		1.000		ID inches =		0.902		Metal =		Aluminum		Click to Select									
Wall =		0.049		Length calculated for fundamental F								Hang Point is for fundamental F node									
Note	Freq Hz	Length inches	Hang Point	Length mm	Hang Point	Note	Freq Hz	Length inches	Hang Point	Length mm	Hang Point										
C1	32.70	85 5/16	19 1/8	2165.2	485.4	C5	523.30	21 5/16	4 3/4	540.9	121.3										
E	41.21	76	17 1/16	1928.9	432.5	E	659.30	19	4 1/4	482.2	108.1										
G	49.00	69 11/16	15 5/8	1768.7	396.5	G	784.00	17 7/16	3 15/16	442.6	99.2										
A [#] /B ^b	58.30	63 7/8	14 5/16	1621.1	363.5	A [#] /B ^b	932.30	16	3 9/16	406.1	91.0										
D2	73.41	56 15/16	12 3/4	1445.1	324.0	D6	1,174.61	14 1/4	3 3/16	361.7	81.1										
Total feet =		29.3		Total cm=		892.9		Total feet required		7.3		Total cm=		223.3							
C2	65.40	60 5/16	13 1/2	1530.7	343.2	C6	1,046.50	15 1/16	3 3/8	382.3	85.7										
E	82.40	53 3/4	12 1/16	1364.2	305.8	E	1,318.50	13 7/16	3	341.0	76.5										
G	98.01	49 5/16	11 1/16	1251.6	280.6	G	1,568.00	12 5/16	2 3/4	312.5	70.1										
A [#] /B ^b	116.50	45 3/16	10 1/8	1146.9	257.1	A [#] /B ^b	1,864.60	11 5/16	2 9/16	287.1	64.4										
D3	146.80	40 1/4	9	1021.5	229.0	D7	2,349.20	10 1/16	2 1/4	255.4	57.3										
Total feet required		20.7		Total cm=		631.5		Total feet required		5.2		Total cm=		157.8							
C3	130.81	42 11/16	9 9/16	1083.4	242.9	C7	2,093.00	10 11/16	2 3/8	271.2	60.8										
E	164.80	38	8 1/2	964.4	216.2	E	2,637.00	9 1/2	2 1/8	241.1	54.1										
G	196.00	34 7/8	7 13/16	885.1	198.4	G	3,136.00	8 11/16	1 15/16	220.5	49.4										
A [#] /B ^b	233.10	31 15/16	7 3/16	810.6	181.7	A [#] /B ^b	3,729.20	8	1 13/16	203.0	45.5										
D4	293.70	28 1/2	6 3/8	723.3	162.2	D8	4,698.40	7 1/8	1 5/8	180.8	40.5										
Total feet required		14.7		Total cm=		446.7		Total feet required		3.7		Total cm=		111.7							
C4	261.60	30 3/16	6 3/4	766.2	171.8																
E	329.61	26 7/8	6	682.1	152.9																
G	392.00	24 5/8	5 1/2	625.0	140.1																
A [#] /B ^b	466.20	22 5/8	5 1/16	574.2	128.7																
D5	587.30	20 1/8	4 1/2	510.8	114.5																
Total feet required		10.4		Total cm=		315.8															
Calculate Length or Frequency for ID & OD entered above																					
Enter F=		220.00		32 7/8		7 3/8		834.4		187.1		Convert		1 3/4		inches to		44.45		mm	
		Enter L ↓												44.45		mm to		1 3/4		inches	
F=		511.99		21 9/16		4 13/16		547.3		122.7		http://leehite.org/Chimes.htm									

Use this page for tubing from Lowe's, OD= 1.00" ID= .930" Wall = .035"



Fixed Shower Rod

Lowe's Item # 27082 Model # 641SMV
60 inch, polished chrome aluminum tubing,



Chime Length Calculator for the C-9 Chord (C E G B ^b D)											
A-440 For a Tube or Rod unrestricted at both ends											
To determine the resonant frequency for a rod set the ID=0 and enter the OD and Metal Type											
Enter values in BLUE , answers in ORANGE (inches) and in YELLOW (mm)											
OD inches =		1.000		ID inches =		0.930		Metal =		Aluminum < Click to Select	
Wall =		0.035 inches		Length calculated for fundamental F Hang Point is for fundamental F node							
Note	Freq Hz	Length inches	Hang Point	Length mm	Hang Point	Note	Freq Hz	Length inches	Hang Point	Length mm	Hang Point
C1	32.70	85 15/16	19 1/4	2181.1	489.0	C5	523.30	21 1/2	4 13/16	545.7	122.3
E	41.21	76 9/16	17 3/16	1943.2	435.7	E	659.30	19 1/8	4 5/16	485.4	108.8
G	49.00	70 3/16	15 3/4	1781.4	399.4	G	784.00	17 9/16	3 15/16	445.7	99.9
A [#] /B ^b	58.30	64 3/8	14 7/16	1633.8	366.3	A [#] /B ^b	932.30	16 1/16	3 5/8	407.7	91.4
D2	73.41	57 5/16	12 7/8	1454.6	326.1	D6	1,174.61	14 5/16	3 3/16	363.3	81.4
Total feet =		29.5		Total cm= 899.4		Total feet required		7.4		Total cm= 224.8	
C2	65.40	60 3/4	13 5/8	1541.8	345.7	C6	1,046.50	15 3/16	3 3/8	385.5	86.4
E	82.40	54 1/8	12 1/8	1373.7	308.0	E	1,318.50	13 1/2	3	342.6	76.8
G	98.01	49 5/8	11 1/8	1259.5	282.4	G	1,568.00	12 7/16	2 13/16	315.7	70.8
A [#] /B ^b	116.50	45 1/2	10 3/16	1154.8	258.9	A [#] /B ^b	1,864.60	11 3/8	2 9/16	288.7	64.7
D3	146.80	40 9/16	9 1/8	1029.5	230.8	D7	2,349.20	10 1/8	2 1/4	257.0	57.6
Total feet required		20.9		Total cm= 635.9		Total feet required		5.2		Total cm= 158.9	
C3	130.81	42 15/16	9 5/8	1089.8	244.3	C7	2,093.00	10 3/4	2 7/16	272.8	61.2
E	164.80	38 1/4	8 9/16	970.8	217.6	E	2,637.00	9 9/16	2 1/8	242.7	54.4
G	196.00	35 1/8	7 7/8	891.5	199.9	G	3,136.00	8 3/4	1 15/16	222.1	49.8
A [#] /B ^b	233.10	32 3/16	7 3/16	816.9	183.2	A [#] /B ^b	3,729.20	8 1/16	1 13/16	204.6	45.9
D4	293.70	28 11/16	6 7/16	728.1	163.2	D8	4,698.40	7 3/16	1 5/8	182.4	40.9
Total feet required		14.8		Total cm= 449.7		Total feet required		3.7		Total cm= 112.5	
C4	261.60	30 3/8	6 13/16	770.9	172.8						
E	329.61	27 1/16	6 1/16	686.8	154.0						
G	392.00	24 13/16	5 9/16	629.7	141.2						
A [#] /B ^b	466.20	22 3/4	5 1/8	577.4	129.5						
D5	587.30	20 1/4	4 9/16	513.9	115.2						
Total feet required		10.4		Total cm= 317.9							

Typical hooks and a turnbuckle found in in the hardware section

