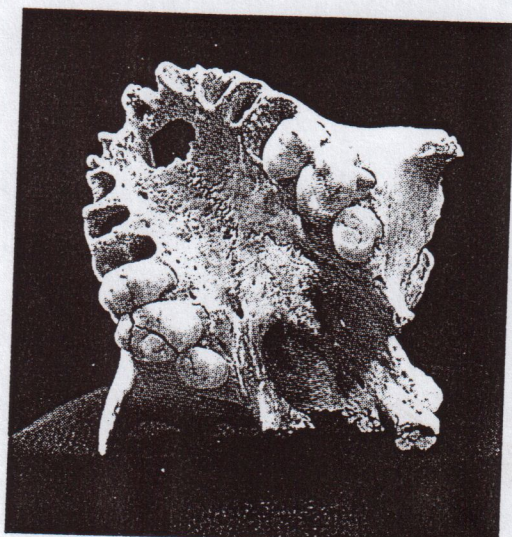


Long-lost Jaw of an Extinct Monkey

It's a grim discovery, but significant: the fossilized remains of a Jamaican monkey, the first and only primate known to have become extinct in the New World after European exploration began.

Ross MacPhee of the American Museum of Natural History and Donald McFarlane of Claremont McKenna



DENIS FINNIN, AMNH

College found this partial cranium along with limb bones of several monkeys deep in Jamaican caves last fall during a Society-funded expedition. Some of the bones lay atop the remains of rats, which

were introduced to the New World by Europeans.

The animal's teeth identify it as a New World monkey, the little-known *Xenothrix mcgregori*, and not a species of African origin. "It's possible we're finding the last of this species," says MacPhee. Scientists are uncertain as to why the monkeys became extinct.

National Geographic

April 1997