

Kariako'no kena akuapa'no (colors & shapes)



Korix Aniki

RED HEART



Aransurix
Kataida

**ORANGE
SQUARE**



Subule
Tukuya

**YELLOW
STAR**



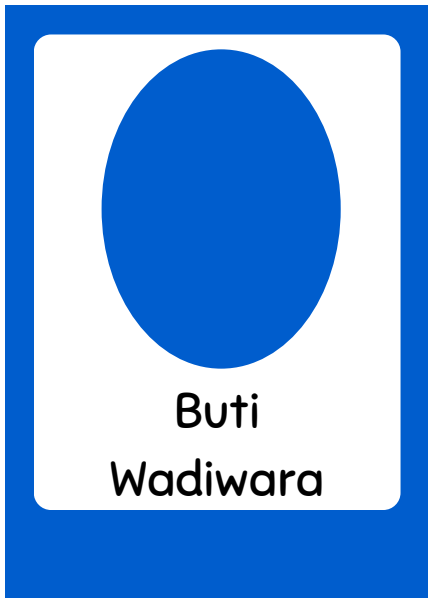
Imo Bixao
Waditaida

**GREEN
RECTANGLE**



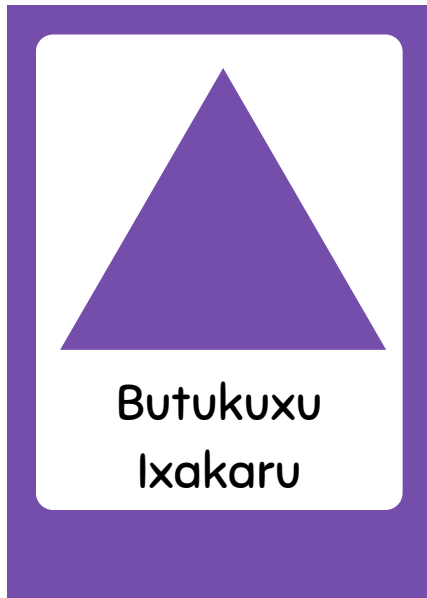
Xeiti
Ixukoriha

**BLACK
TUBE**



Buti
Wadiwara

BLUE OVAL



Butukuxu
Ixakaru

**PURPLE
TRIANGLE**



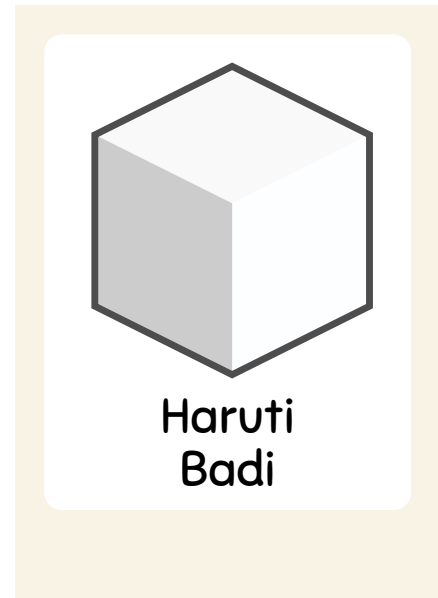
Bunaro
Waratea

**BROWN
CIRCLE**



Kalekorix
Madasibai

**PINK
DIAMOND**



Haruti
Badi

**WHITE
BOX**

Kawayai'no (numbers)

1

ABAN

2

BIAN

3

KABU

4

YAMI

5

ABAKA

6

ABATI

7

KARATSI

8

KAMITI

9

BITIA

10

ABANDAKA

Days of the Week

HIKIKABO



**FIRE
DAY**

MONDAY

SIBAKABO



**STONE
DAY**

TUESDAY

NIKABO



**WATER
DAY**

WEDNESDAY

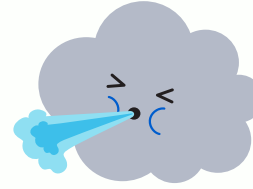
AHUAIKABO



**AIR
DAY**

THURSDAY

HURAKABO



**WIND
DAY**

FRIDAY

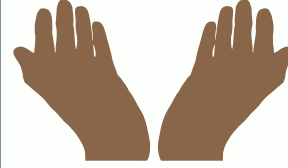
BAWAKABO



**OCEAN
DAY**

SATURDAY

WAMAKABO



**CREATOR
DAY**

SUNDAY

Ka Eiruku (the body)



EIRUKU

BODY



KAISIMU

HEAD



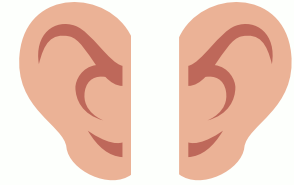
SIMU

FACE



WALARI

HAIR



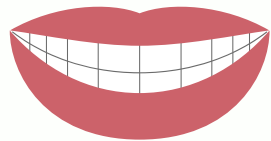
TARIKEI'NO

EARS



AKO'NO

EYES



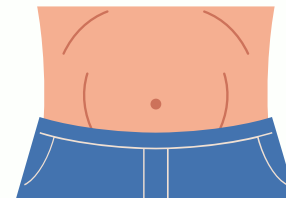
ARIKAI

MOUTH



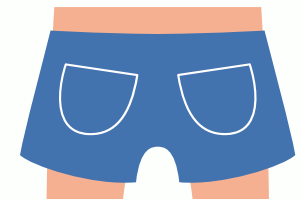
YUMA

NOSE



TOBA

STOMACH



AYU

BUTTOCK

Ka Eiruku (the body)



UHABU

HAND



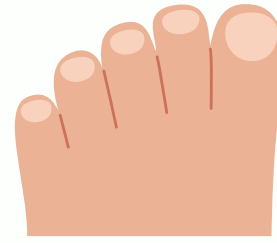
EBIRA'NO

FINGERS



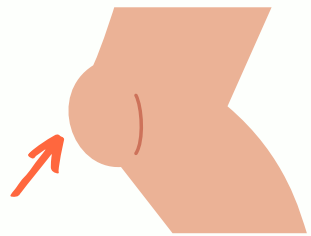
UKUDI

FOOT



EBIHERA'NO

TOES



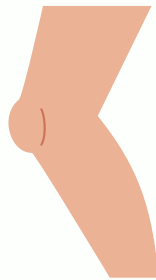
KODORO

KNEE



ATUNA

ARM



ATU

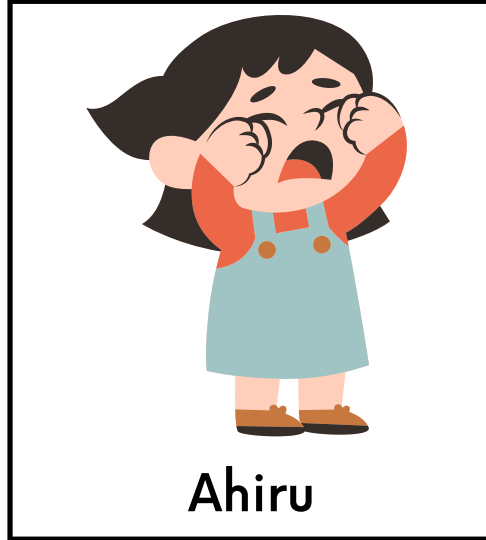
LEG

Direna'no (emotions)



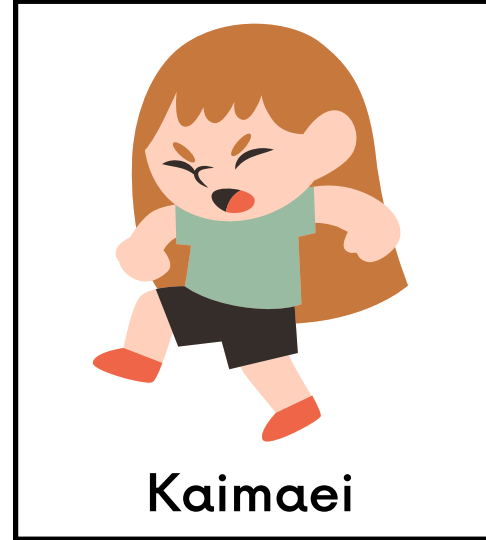
Talata

Happy



Ahiru

Sad



Kaimaei

Mad/Angry



Aikuwa'ki

Scared



Atutaha'ki

Excited



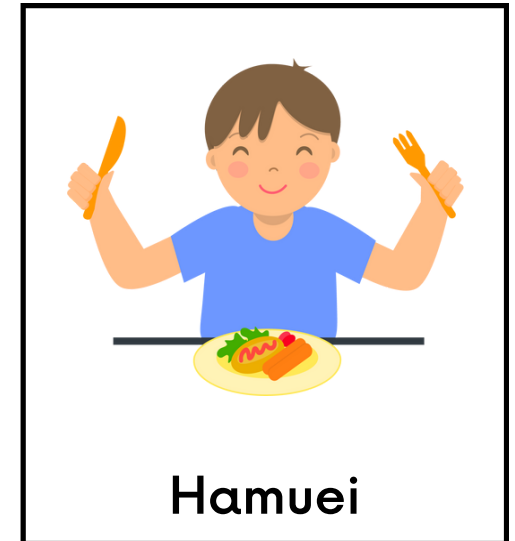
Siwato

Tired



Aburita'ki

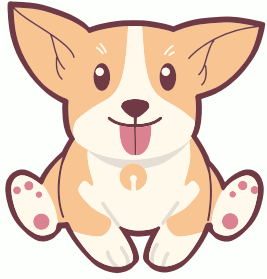
Embarrassed



Hamuei

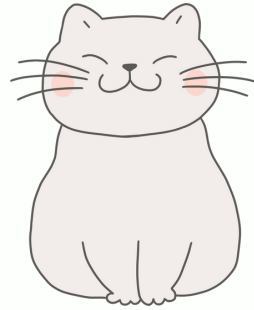
Hungry

Murulu'no (animals)



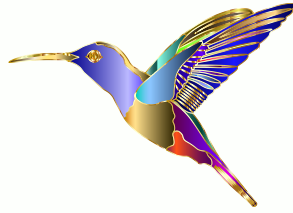
AON

DOG



ARWA

CAT



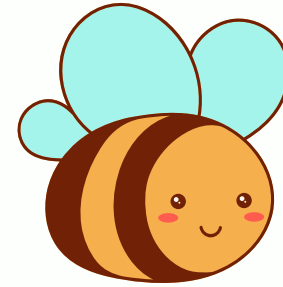
KOLIBRI

HUMMINGBIRD



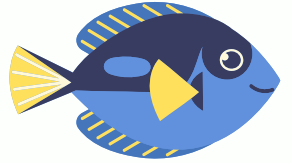
AWARA

BIRD



KOUI

BEE



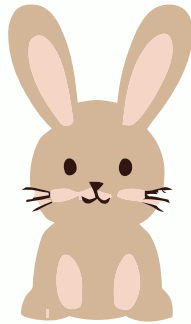
HIME

FISH



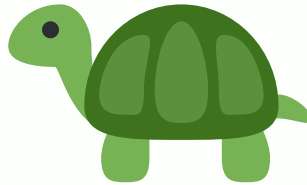
HARIRA

CHICKEN



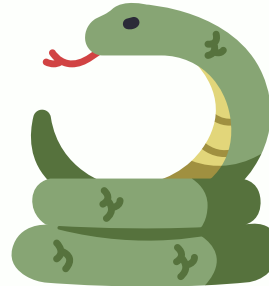
ATAPANA

RABBIT



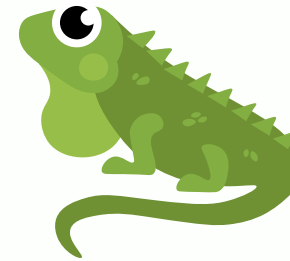
HIKOTEA

TURTLE



ORI

SNAKE



IWANA

IGUANA



KOKUI

FROG

Murulu'no (animals)



BUYIRI

BAT



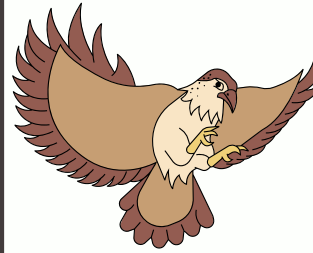
AYARA

SPIDER



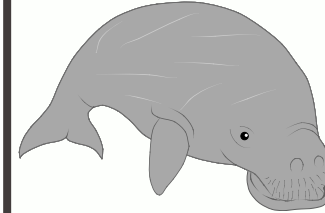
AONBAYA

BEAR



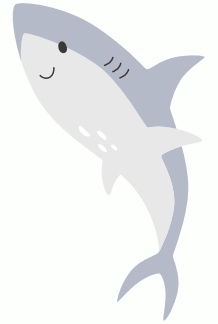
WARAWAO

HAWK



MANATI

MANATEE



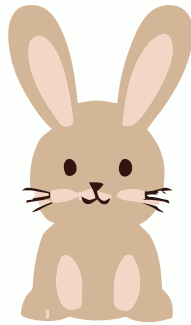
TIBURON

SHARK



KAREY

SEA TURTLE



ATAPANA

RABBIT



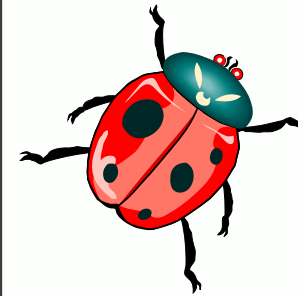
HIWAKA

PARROT



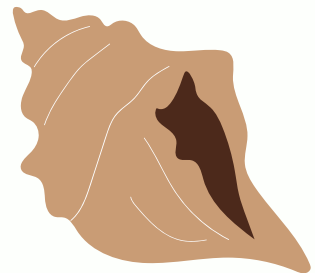
MUKARO

OWL



WUXII

INSECT



KARUXO

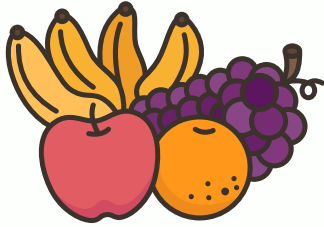
CONCH

Aeike'no (foods)



AHI

PEPPER



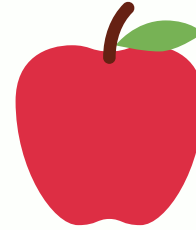
AKOYUAHA

FRUIT



AUYAMA

CALABASH



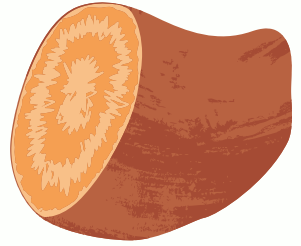
APRA

APPLE



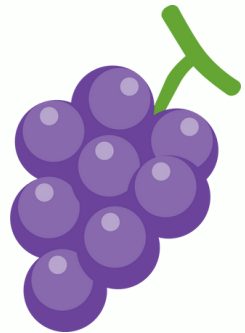
BABAIYA

PAPAYA



BATATA

SWEET
POTATO



BEIBEI

GRAPE



BEISAU

RAISIN



BIJA

ANATTO



HIWERA

GOURD



KABATA

SALT



KAHUIL

CASHEW

Aeike'no (foods)



KENEBA

QUENEPA



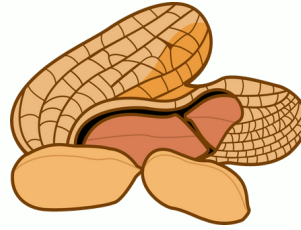
KONUTANISA

VEGETABLE



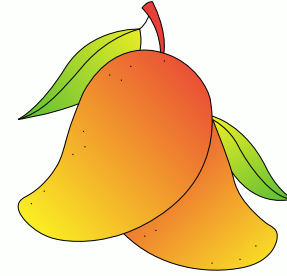
MAISI

CORN



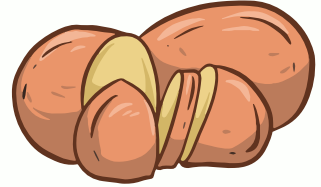
MANI

PEANUT



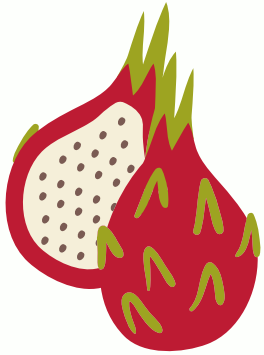
MONKU

MANGO



PAAPA

POTATO



PITAHAYA

DRAGON
FRUIT



SEKOTUMA

ONION



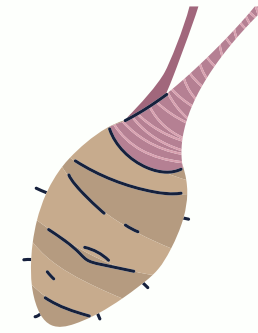
TUSA

CORN COB



WAYABA

GUAVA



YAUTIA

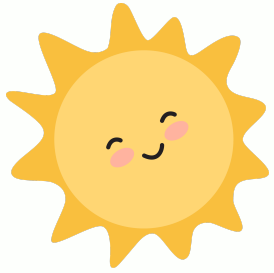
YAM



YAYAMA

PINEAPPLE

Ukili (weather)



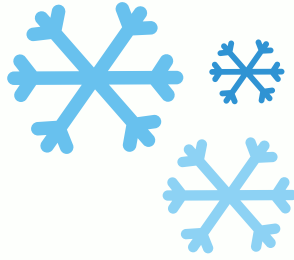
WEHI

SUN



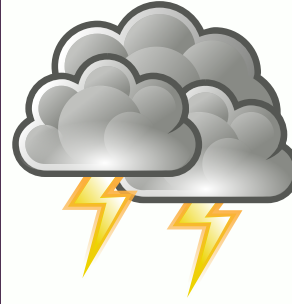
UROHU

CLOUD



KUSINIHO

SNOW



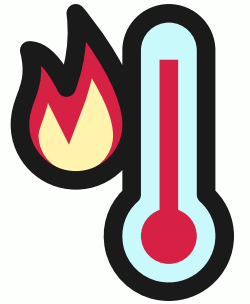
WATAUBA

THUNDER



KUTAUBA

LIGHTENING



HAIWA

HOT



HUYA

RAIN



WABAN

STORM



HURA

WIND



KIWARI

RAINBOW



KURULA

COLD

Akuaibawa (nature)



KAYA

ISLAND



BAWA

OCEAN/SEA



BON

RIVER



NI'TIKIDA

WATERFALL



LUWOBU

STREAM



WIHO

MOUNTAIN



MA'BAIWA

DESERT



BEYABU

BEACH



ARABUKO

FOREST



XARA

LAKE